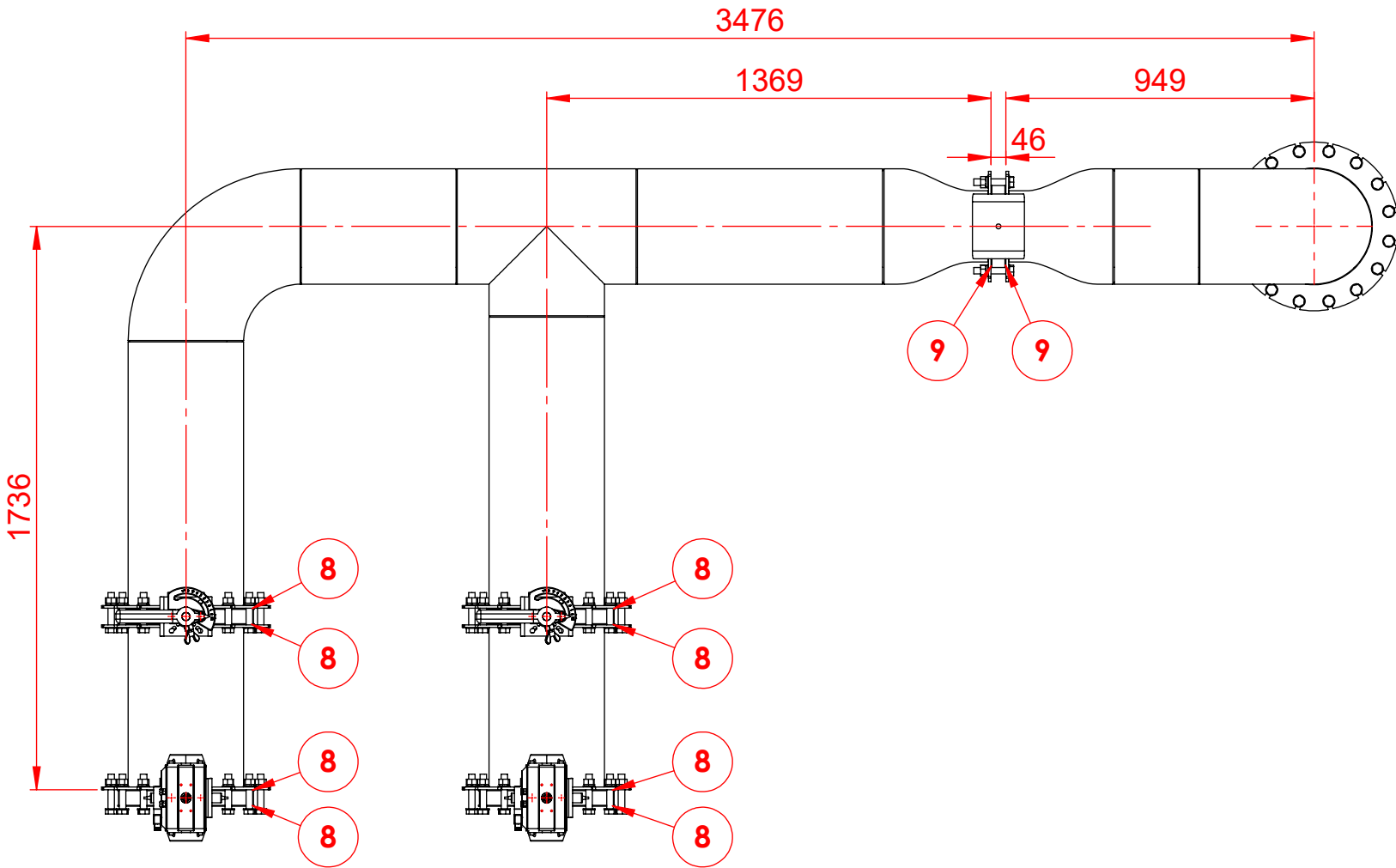



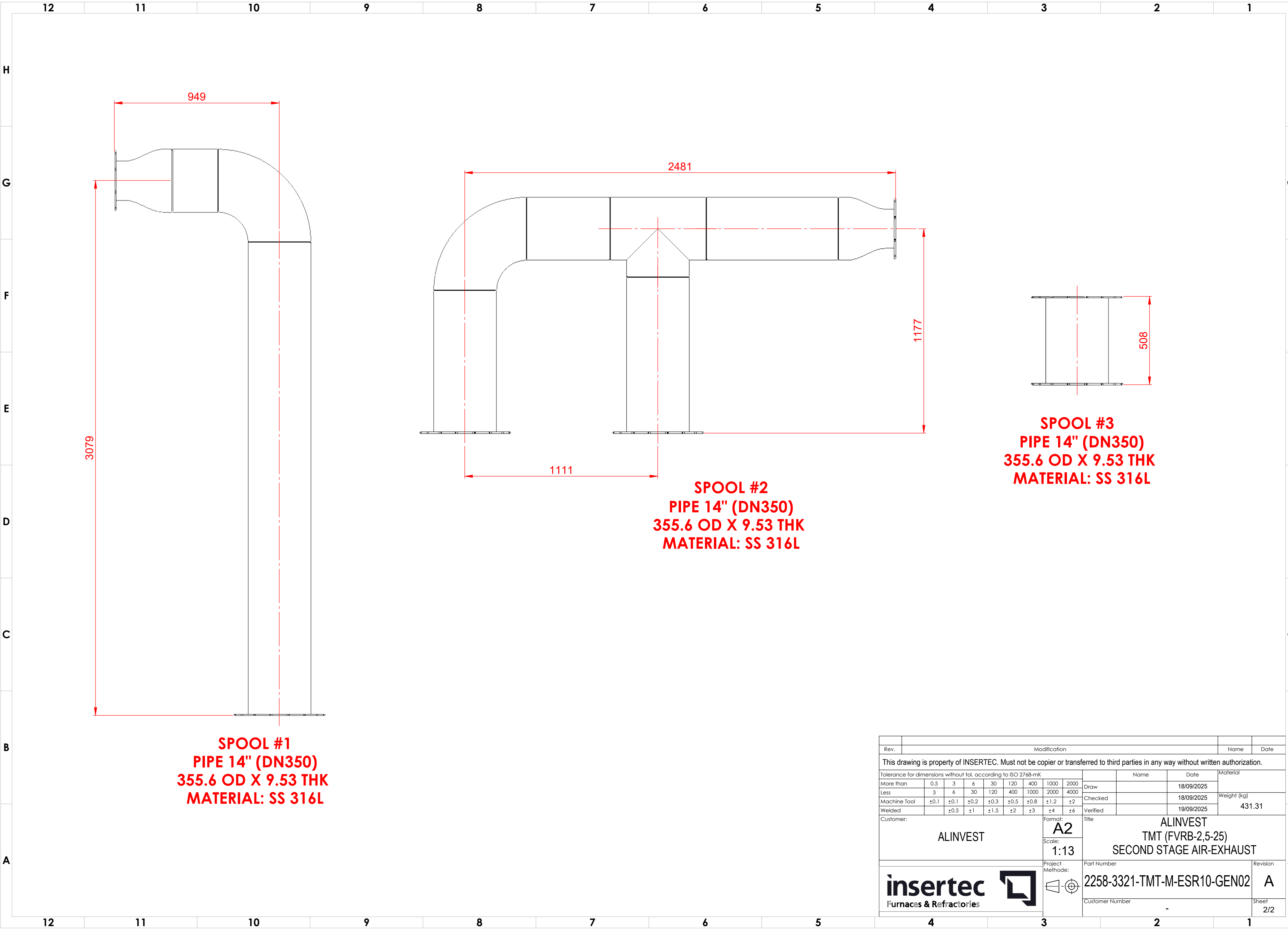
5		4		3		2		1	
9	DIN 2690		GASKET - KLINGERSIL C-4430 - 3 THK. - DN200	FIBERGLASS WINBR			-	2	0
8	DIN 2690		GASKET - KLINGERSIL C-4430 - 3 THK. - DN350	FIBERGLASS WINBR			-	9	0
7	DIN125-M20-ST	A	WASHER M20	ST			0.02	176	3.52
6	DIN127-M20-ST	A	WASHER M20	ST			0.02	88	1.76
5	DIN934-M20-8	A	NUT M20	8			0.06	88	5.28
4	DIN933-M20X110-8.8	A	BOLT M20X110	8.8			0.35	88	30.8
3	-		CONTROL BUTTERFLY VALVE FOR INSTALLATION BETWEEN 2 FLANGES DN 200 PN 10 FOR AIR AND GAS JASTA 606.450°C. COMPLETE ASSEMBLED WITH PNEUMATIC ACTUATOR. OPEN/CLOSE IN 3 - 5 SECONDS MAX. AND SIEMENS SIPART PS 2, TYPE: 6DR5010-0NG01-0AA0-Z C20, 4-20 MA IN- AND OUTPUT, 24VDC	COMMERCIAL			0	1	0
2	-		BUTTERFLY VALVE FOR INSTALLATION BETWEEN 2 FLANGES DN350, INCL. STEP SEAT SEALING FOR AIR / WASTE GAS 450°C. WITH PNEUMATIC ACTUATOR, SINGLE-ACTING, OPEN/CLOSE IN 1 SECOND 5 BAR COMPRESSED AIR WITH 3/2-WAY SOLENOID VALVE 24VDC LEAKAGE APPROX. 0.02% OF KV 90°, PN 10, INCL. POSITION SWITCH 24VDC OPEN/CLOSE, 2-WIRE	COMMERCIAL			0	2	0
1	-		BUTTERFLY VALVE FOR INSTALLATION BETWEEN 2 FLANGES DN 350 PN 10 FOR AIR, WITH HANDLE	COMMERCIAL			0	2	0
N°	PART NUMBER / ARTICLE CODE	REV.	DESCRIPTION	MATERIAL	MANUFACTURER	TAG	WEIGHT (KG)	QT Y.	TOTAL WEIGHT (KG)



TOP VIEW
SCALE 1:20

ISOMETRIC VIEW
SCALE 1:13



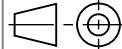
Rev.		Modification							Name		Date						
This drawing is property of INSERTEC. Must not be copied or transferred to third parties in any way without written authorization.																	
Tolerance for dimensions without tol. according to ISO 2768-mK											Name		Date		Material		
More than		0.5	3	6	30	120	400	1000	2000	Draw		18/09/2025		Weight (kg)		431.31	
Less		3	6	30	120	400	1000	2000	4000	Checked		18/09/2025					
Machine Tool		±0.1	±0.1	±0.2	±0.3	±0.5	±0.8	±1.2	±2	Verified		19/09/2025					
Welded			±0.5	±1	±1.5	±2	±3	±4	±6								
Customer:									Format:		Title		ALINVEST TMT (FVRB-2,5-25) SECOND STAGE AIR-EXHAUST				
ALINVEST									A2								
									Scale:								
									1:13								
									Project Methode:		Part Number		Revision				
											2258-3321-TMT-M-ESR10-GEN02		A				
									Customer Number		Sheet						
											1/2						



SPOOL #1
PIPE 14" (DN350)
355.6 OD X 9.53 THK
MATERIAL: SS 316L

SPOOL #2
PIPE 14" (DN350)
355.6 OD X 9.53 THK
MATERIAL: SS 316L

SPOOL #3
PIPE 14" (DN350)
355.6 OD X 9.53 THK
MATERIAL: SS 316L

Rev.		Modification							Name		Date
This drawing is property of INSERTEC. Must not be copier or transferred to third parties in any way without written authorization.											
Tolerance for dimensions without tol. according to ISO 2768-mK									Name		Date
More than	0.5	3	6	30	120	400	1000	2000	Draw	18/09/2025	
Less	3	6	30	120	400	1000	2000	4000	Checked	18/09/2025	
Machine Tool	±0.1	±0.1	±0.2	±0.3	±0.5	±0.8	±1.2	±2	Verified	19/09/2025	
Welded		±0.5	±1	±1.5	±2	±3	±4	±6	431.31		
ALINVEST				Format:		ALINVEST TMT (FVRB-2,5-25) SECOND STAGE AIR-EXHAUST					
				A2							
				Scale:							
				1:13							
Project				Part Number		Revision					
Methode:				2258-3321-TMT-M-ESR10-GEN02		A					
 						Customer Number					Sheet
						-					2/2